



Ceramics

CONTENTS

KAMINOHATA Ceramics Center	01
Shinjo Higashiyama-yaki ※added 4 products in Oct.2022	08
Narushima-Yaki Wakuigama	19
Hirashimizu-yaki Seiryugama.....	28
245 studio	31
Akishinokama ※added in Oct.2022	33

【Update information】

Mar. 2022 published 5 manufacturers and the products
Oct. 2022 added 1 manufacturers and the products
Oct. 2022 added 4 products (Shinjo Higashiyama-yaki)

〈Contact us〉

Yamagata International Economic Development Support Organization
<https://craft.yamagata-export.jp/inquiry01/> (Inquiry Form)

◆ Corporate profile



BUSINESS NUMBER	
COMPANY NAME(JAPANESE)	銀山上の畑焼陶芸センター
COMPANY NAME	KAMINOHATA Ceramics Center
YEAR OF ESTABLISHMENT	1981
TYPE OF INDUSTRY	Manufacturing, Sales
MAIN PRODUCT	Porcelain
POST CODE	999-4333
COMPANY ADDRESS	162-1 Ginzanshinhata Obanazawa Yamagata Japan
REPRESENTATIVE	Hyodo Ito
TEL	+81-237-28-2159
FAX	+81-237-28-2159
URL	https://ginzan-kaminohatayaki.jp/
Instagram	kaminohatayaki
Facebook	kaminohatayaki
E-commerce Website	https://shop.ginzan-kaminohatayaki.jp/
MAIN SELLING CHANNELS	
SALES PERFORMANCE OF DOMESTIC AND OVERSEAS EC SALES	
AVAILABLE LANGUAGE	Japanese

◆ EPISODE OF FOUNDATION FOUNDER'S THOUGHT

Being persistent about making pottery exclusively using local materials to revive Kaminohata-yaki, it was difficult to find the right materials (pottery stones). I walked around the mountains and riverbanks near the old kiln and collected clay and stones considered suitable for pottery. Then I brought them to the Industrial Research Institute Ceramic Science Branch in Mie Prefecture where I was training at the time. The collected materials underwent fluorescent X-ray analysis, and were actually made into some pottery pieces for testing. Fluorescent X-ray analysis was also conducted on pottery pieces found from the old kiln site, and it was confirmed from a scientific perspective that both materials have the same properties. Furthermore, I worked to revive the old techniques, including handling a potter's wheel, hand painting, studying ancient documents, and reproducing paintings on porcelain pieces from the old kiln site (from which I found the santamon pattern). Six years were spent on these efforts to revive the kiln from 1974 to 1980, when the revival of Kaminohata-kiln came into sight. I then returned to my hometown, where I received much attention within the Tohoku region and across the nation for reviving pottery-making in collaboration with public and private sectors, and making it into a local industry. This attention on my efforts has been the driver of my passion during the past 40 years, to never allow the kiln fire to vanish.

◆ CRAFTSMAN'S THOUGHT, COMMITMENT RELATIONSHIP WITH THE COMMUNITY

- 1) First and foremost, use materials found in locally.
- 2) Reproduce ancient works but also create various items required in the contemporary lifestyle.
- 3) Continue efforts to make known santamon, the characteristic pattern of Kaminohata pottery, throughout Japan and the world.
- 4) Create products by actively teaming up with partners from different industries.
- 5) Continue efforts to pass down traditional Japanese culture to young people as well as adults who have interest in such activities in the community through the art of pottery and Japanese tea ceremony.

◆ Product information



BRAND NAME	Kaminohata-yaki
PRODUCT NAME	KARAKUSA IROE SANTAMON Beer mag cup
GENERIC NAME	Mag cup
MATERIALS	Porcelain
PERSON IN CHARGE	Hyodo Ito
PRODUCTION AREA	Obanazawa Yamagata Japan
SIZE	7.8 x 7.8 x 9.5cm
WEIGHT	250g
DOMESTIC RETAIL PRICE	JPY9,350 (excluding tax)

A blue-and white beer mug with overglaze enamel. Features Kaminohata-yaki's santamon (peach, pomegranate and Buddha's hand citron) and karakusa (arabesque) patterns. A popular product unglazed on the inside, enabling beer to form fine bubbles and become creamy.



BRAND NAME	Kaminohata-yaki
PRODUCT NAME	SOMETSUKE KARAKUSA SANTAMON
GENERIC NAME	Mag cup
MATERIALS	Porcelain
PERSON IN CHARGE	Hyodo Ito
PRODUCTION AREA	Obanazawa Yamagata Japan
SIZE	7.8 x 7.8 x 9.5cm
WEIGHT	250g
DOMESTIC RETAIL PRICE	JPY9,350 (excluding tax)

A blue-and white beer mug with overglaze enamel. Features Kaminohata-yaki's santamon (peach, pomegranate and Buddha's hand citron) and karakusa (arabesque) patterns. A popular product unglazed on the inside, enabling beer to form fine bubbles and become creamy.



BRAND NAME	Kaminohata-yaki
PRODUCT NAME	SOMETSUKE SANTAMON Coffee cup & saucer
GENERIC NAME	Coffee cup & saucer
MATERIALS	Porcelain
PERSON IN CHARGE	Hyodo Ito
PRODUCTION AREA	Obanazawa Yamagata Japan
SIZE	Cup : 7.4 x 7.4 x 7.5cm Saucer : 13 x 13 x 2.5cm
WEIGHT	Cup : 150g Saucer : 150g
DOMESTIC RETAIL PRICE	JPY9,350 (excluding tax)

A sleek coffee cup and saucer set in underglaze blue with Kaminohata-yaki's santamon pattern (peach, pomegranate and Buddha's hand citron). I hope people will feel peace of mind when they use these items.

◆ Product information



BRAND NAME	Kaminohata-yaki
PRODUCT NAME	IROE SANTAMON Matcha cup
GENERIC NAME	Matcha cup
MATERIALS	Porcelain
PERSON IN CHARGE	Hyodo Ito
PRODUCTION AREA	Obanazawa Yamagata Japan
SIZE	12 x 12 x 7.8cm
WEIGHT	250g
DOMESTIC RETAIL PRICE	JPY55,000 (excluding tax)

An attention-grabbing tea cup for tea time. The inside is glazed black, which contrasts with the color of matcha beautifully. The exterior is adorned with karakusa in underglaze blue with the santamon pattern (peach, pomegranate and Buddha's hand citron) in overglaze enamel.



BRAND NAME	Kaminohata-yaki
PRODUCT NAME	AKAE BAIRINMON Incense burner
GENERIC NAME	Incense burner
MATERIALS	Porcelain
PERSON IN CHARGE	Hyodo Ito
PRODUCTION AREA	Obanazawa Yamagata Japan
SIZE	9 x 9 x 10.5cm
WEIGHT	260g
DOMESTIC RETAIL PRICE	JPY20,000 (excluding tax)

A delightful incense burner from Kaminohata-yaki. The joyful air of plum grove at the height of spring glory is expressed in overglaze enamel.



BRAND NAME	Kaminohata-yaki
PRODUCT NAME	KARAKUSA SANTAMON IROE Bowl
GENERIC NAME	Lidded Bowl
MATERIALS	Porcelain
PERSON IN CHARGE	Hyodo Ito
PRODUCTION AREA	Obanazawa Yamagata Japan
SIZE	[Bowl] 9.3 x 9.3 x 7.2cm
WEIGHT	190g
DOMESTIC RETAIL PRICE	JPY11,000/pc (excluding tax)

Can be used as a candy container at tea time or as a condiment container at dinner time. Features a lidded bowl with the lid in silver painting and the body adorned with blue-and white karakusa with the santamon pattern (peach, pomegranate and Buddha's hand citron) in overglaze enamel.

◆ Product information



BRAND NAME	Kaminohata-yaki
PRODUCT NAME	IROE SANTAMON Sake set 1
GENERIC NAME	Sake set
MATERIALS	Porcelain
PERSON IN CHARGE	Hyodo Ito
PRODUCTION AREA	Obanazawa Yamagata Japan
SIZE	Tokkuri : 7 x 7 x 9.4cm Sakazuki : 6 x 6 x 4.2cm
WEIGHT	Tokkuri:150g Sakazuki : 50g / pc
DOMESTIC RETAIL PRICE	JPY16,500/set (excluding tax)

An attention-grabbing sake set at a party featuring Kaminohata-yaki's santamon pattern (peach, pomegranate and Buddha's hand citron) in underglaze blue and overglaze enamel. The mouth rim and bottom part of the vessels are mounted with red and black belts.



BRAND NAME	Kaminohata-yaki
PRODUCT NAME	IROE SANTAMON Sake set 2
GENERIC NAME	Sake set
MATERIALS	Porcelain
PERSON IN CHARGE	Hyodo Ito
PRODUCTION AREA	Obanazawa Yamagata Japan
SIZE	Tokkuri : 5.9 x 5.9 x 12.5cm Sakazuki : 7.5 x 7.5 x 3.5cm
WEIGHT	Tokkuri : 220g Sakazuki : 50g
DOMESTIC RETAIL PRICE	JPY27,500/set (excluding tax)

Kaminohata-yaki's santamon pattern (peach, pomegranate and Buddha's hand citron) and leaf karakusa are arranged in a contemporary style in overglaze enamel. The sake cup is thin with a wide rim, which was a popular style in olden times. A sake vessel set with which you can savor every sip of sake.



BRAND NAME	Kaminohata-yaki
PRODUCT NAME	IROE YOURAKU SANTAMON Sake set
GENERIC NAME	Sake set
MATERIALS	Porcelain
PERSON IN CHARGE	Hyodo Ito
PRODUCTION AREA	Obanazawa Yamagata Japan
SIZE	Tokkuri : 7.2 x 7.2 x 10.4cm Sakazuki : 5.2 x 5.2 x 4.2cm
WEIGHT	Tokkuri : 190g
DOMESTIC RETAIL PRICE	JPY22,000/set (excluding tax)

A sake bottle and cups with Kaminohata-yaki's santamon pattern (peach, pomegranate and Buddha's hand citron) and yoraku, a talisman, expressed in overglaze enamel. With a darker underglaze blue, the items are overall finished in a classical manner. A sake vessel set with which you can savor every sip of sake.

Product information



BRAND NAME	Kaminohata-yaki
PRODUCT NAME	UNGLAZED YAKISHIME SAOTAMON Sake set
GENERIC NAME	Sake set
MATERIALS	Porcelain
PERSON IN CHARGE	Hyodo Ito
PRODUCTION AREA	Obanazawa Yamagata Japan
SIZE	Tokkuri : 8.8 x 8.8 x 9.7cm Sakazuki : 7 x7 x 4.5cm
WEIGHT	Tokkur:250g Sakazuki : 50g/pc
DOMESTIC RETAIL PRICE	JPY16,500/set (excluding tax)

Yakishime, or unglazed, to allow users enjoy the texture of the pottery stone used as the material. Kaminohata-yaki's santamon pattern (peach, pomegranate and Buddha's hand citron) are featured in overglaze enamel. An excellent sake set from Kaminohata-yaki.



BRAND NAME	Kaminohata-yaki
PRODUCT NAME	Gold Silver and Red ESAI Cooler
GENERIC NAME	Bottle cooler
MATERIALS	Porcelain
PERSON IN CHARGE	Hyodo Ito
PRODUCTION AREA	Obanazawa Yamagata Japan
SIZE	20.8 x 20.5 x 10.4cm 1kg
WEIGHT	JPY80,000 (excluding tax)
DOMESTIC RETAIL PRICE	Kaminohata-yaki

A spouted bottle cooler (for Japanese sake) featuring a Rinpa School style painting in overglaze gold, silver and red. Chilled sake becomes even more tasty.



BRAND NAME	Kaminohata-yaki
PRODUCT NAME	Gold Silver and Red ESAI Cooler & Sake set
GENERIC NAME	Bottle cooler & Sake set
MATERIALS	Porcelain
PERSON IN CHARGE	Hyodo Ito
PRODUCTION AREA	Obanazawa Yamagata Japan
SIZE	Tokkuri : 8.4 x 8.4 x 11cm Sakazuki : 7 x7 x 4.5cm
WEIGHT	Tokkuri : 250g Sakazuki : 50g/pc
DOMESTIC RETAIL PRICE	Bottle cooler : JPY80,000 (excluding tax) Sake set : JPY94,300 (excluding tax)

A set comprised of a bottle cooler in overglaze gold, silver and red, and yakishime, or unglazed sake set featuring Kaminohata-yaki's santamon pattern (peach, pomegranate and Buddha's hand citron) in overglaze enamel. A set of sake vessels that brings about a luxurious sake time.

◆ Product information



杓立	7.7x7.7x17cm	460g
水指	15.5x15.5x16cm	1,350g
建水	127x127x8.7cm	500g
蓋置	7.2x7.2x6.5cm	150g

BRAND NAME	Kaminohata-yaki
PRODUCT NAME	SOMETSUKE KARAKUSA SANTAMON
GENERIC NAME	Kaigu (Set of tea items)
MATERIALS	Porcelain
PERSON IN CHARGE	Hyodo Ito
PRODUCTION AREA	Obanazawa Yamagata Japan
SIZE	
WEIGHT	
DOMESTIC RETAIL PRICE	JPY200,000 (excluding tax)

A set of tea items in sakimbukuro (gold dust bag) shape, considered to be an auspicious shape, and adorned in Kaminohata-yaki's santamon pattern (peach, pomegranate and Buddha's hand citron) and white karakusa, a symbol of eternity, against a colored background. A set of tea items that can be used individually.



BRAND NAME	Kaminohata-yaki
PRODUCT NAME	SOMETSUKE FUYOTE KAZARI ZARA
GENERIC NAME	Ornamental plate
MATERIALS	Porcelain
PERSON IN CHARGE	Hyodo Ito
PRODUCTION AREA	Obanazawa Yamagata Japan
SIZE	29.4 x 29.4 x 4.5cm
WEIGHT	1.2kg
DOMESTIC RETAIL PRICE	JPY200,000 (excluding tax)

An ornamental plate in Fuyote (confederate rose) style, which is one style in the list of Kaminohata-yaki's painting patterns. This plate is created based on an art object that has been handed down for generations.



BRAND NAME	Kaminohata-yaki
PRODUCT NAME	SOMETSUKE BUDDA'S HAND CITRON
GENERIC NAME	Large pot
MATERIALS	Porcelain
PERSON IN CHARGE	Hyodo Ito
PRODUCTION AREA	Obanazawa Yamagata Japan
SIZE	45 x 45 x 16.5cm
WEIGHT	4.7kg
DOMESTIC RETAIL PRICE	JPY400,000 (excluding tax)

One of Kaminohata-yaki's santamon patterns (peach, pomegranate and Buddha's hand citron), a Buddha's hand citron (brings good fortune) was sketched and featured in dark and pale underglaze blue. The exterior has a seigaiha pattern (wave crest pattern) engraving. It can be enjoyed as a large ornamental bowl, or use it as a water lily bowl.

◆ Product information



BRAND NAME	Kaminohata-yaki
PRODUCT NAME	DOJOJI Ornamental Bottle
GENERIC NAME	Ornamental Bottle
MATERIALS	Porcelain
PERSON IN CHARGE	Hyodo Ito
PRODUCTION AREA	Obanazawa Yamagata Japan
SIZE	25 x 25 x 42.5cm
WEIGHT	9.5kg
DOMESTIC RETAIL PRICE	JPY500,000 (excluding tax)

An ornamental bell-shaped bottle themed on the famous traditional Japanese play, "Dojoji" of Noh. The motif of rips and cracks represents the sentiment and emotions of Anchin and Kiyohime. An ornamental masterpiece from Kaminohata-yaki.

◆ Corporate profile



BUSINESS NUMBER	
COMPANY NAME(JAPANESE)	有限会社 新庄東山焼
COMPANY NAME	Shinjo Higashiyama-yaki
YEAR OF ESTABLISHMENT	1841
TYPE OF INDUSTRY	Manufacturing, sales of pottery
MAIN PRODUCT	Pottery
POST CODE	996-0002
COMPANY ADDRESS	1441 Kanazawa Shinjo Yamagata Japan
REPRESENTATIVE	Yahei WAKUI
TEL	+81-(0)233-22-3122
FAX	+81-(0)233-22-3372
URL	http://higashiyamayaki.com/
Instagram	higashiyamayaki_daisuke
E-commerce Website	http://shop.higashiyamayaki.com/
MAIN SELLING CHANNELS	In-house store, Domestic EC site, Retail stores
SALES PERFORMANCE OF DOMESTIC AND OVERSEAS EC SALES	Own company's HP, Hometown tax payment site
AVAILABLE LANGUAGE	Japanese

◆ EPISODE OF FOUNDATION FOUNDER'S THOUGHT

The founder of Shinjo Higashiyama-yaki, Yahei Wakui was originally a potter from Echigo Province. As he moved from one place to another around Japan to train, he became fascinated with pottery clay in Higashiyama, and in 1841, established Higashiyama-yaki pottery, an official kiln for the Tozawa Clan of Shinjo.

""Produce practical daily-use pottery"" has been our family rule since the first generation.

◆ CRAFTSMAN'S THOUGHT, COMMITMENT RELATIONSHIP WITH THE COMMUNITY

I endeavor to produce items that match with the times and that are required by customers, adhering to the basics of traditional pottery-making passed down from the Edo period. To this end, I spare no effort in improving my skills every day so that I am able to deliver pottery that pleases customers.

My family has been making pottery for seven generations using quality clay for pottery found on our premises as well as various glazes handed down within our family, including namakoyu (literally, sea cucumber glaze) that represents the color of Dewa Province's snow in the shade.

◆ **Product information**



BRAND NAME
PRODUCT NAME Shinjo Higashiyama-yaki
GENERIC NAME Mint-yu glazed small bowl
MATERIALS Bowl
PERSON IN CHARGE Clay
PRODUCTION AREA Yahei WAKUI
SIZE Shinjo Yamagata Japan
WEIGHT 10 × 10 × 4.5cm
DOMESTIC RETAIL PRICE 150g

A mint glazed small bowl in contemporary style. Convenient-sized, it goes with any food.



BRAND NAME Shinjo Higashiyama-yaki
PRODUCT NAME Mint-yu glazed coffee cup & saucer
GENERIC NAME Coffee cup & saucer
MATERIALS Clay
PERSON IN CHARGE Yahei WAKUI
PRODUCTION AREA Shinjo Yamagata Japan
SIZE Cup : 7 × 10 × 7cm Saucer : Φ14cm
WEIGHT 350g
DOMESTIC RETAIL PRICE JPY1,700 (excluding tax)

A beautiful mint glazed cup and saucer set.



BRAND NAME Shinjo Higashiyama-yaki
PRODUCT NAME Free Cup (Blue, White, Green)
GENERIC NAME Cup
MATERIALS Clay
PERSON IN CHARGE Yahei WAKUI
PRODUCTION AREA Shinjo Yamagata Japan
SIZE 9 × 9 × 10cm
WEIGHT 210g
DOMESTIC RETAIL PRICE JPY1,000/pc (excluding tax)

A signature cup of Higashiyama-yaki in three colors. Suitable as a cup for your personal use.

Product information



BRAND NAME	Shinjo Higashiyama-yaki
PRODUCT NAME	Donburi
GENERIC NAME	Bowl
MATERIALS	Clay
PERSON IN CHARGE	Yahei WAKUI
PRODUCTION AREA	Shinjo Yamagata Japan
SIZE	13 × 13 × 7cm
WEIGHT	300g
DOMESTIC RETAIL PRICE	JPY1,000 (excluding tax)

Signature bowls of Higashiyama-yaki in three colors. Not too large, it is perfect for serving rice bowl dishes and soups.



BRAND NAME	Shinjo Higashiyama-yaki
PRODUCT NAME	Namako-yu glazed coffee cup & saucer
GENERIC NAME	Coffee cup & saucer
MATERIALS	Clay
PERSON IN CHARGE	Yahei WAKUI
PRODUCTION AREA	Shinjo Yamagata Japan
SIZE	Coffee cup : 7×10×7cm, Saucer : Φ14cm
WEIGHT	350g
DOMESTIC RETAIL PRICE	JPY1,400 (excluding tax)

One distinctive feature of Shinjo's traditional craft of Shinjo Higashiyama-yaki that has continued since Edo period is its use of clear blue glaze, or namako-yu, that is said to represent the color of Dewa Province's snow in shade. This is a coffee cup and saucer set glazed in namakoyu glaze.



BRAND NAME	Shinjo Higashiyama-yaki
PRODUCT NAME	Free cup with handle (Blue, White)
GENERIC NAME	Cup
MATERIALS	Clay
PERSON IN CHARGE	Yahei WAKUI
PRODUCTION AREA	Shinjo Yamagata Japan
SIZE	8 × 12 × 9cm
WEIGHT	230g
DOMESTIC RETAIL PRICE	JPY1,300/pc (excluding tax)

A suitable as a cup for your personal use. The handle is large and easy to hold. Serve the beverage of your choice, whether coffee, tea to milk.

◆ Product information



BRAND NAME	Shinjo Higashiyama-yaki
PRODUCT NAME	Mint-yu glazed Rice bowl
GENERIC NAME	Rice bowl
MATERIALS	Clay
PERSON IN CHARGE	Yahei WAKUI
PRODUCTION AREA	Shinjo Yamagata Japan
SIZE	12 × 12 × 5.5cm
WEIGHT	230g
DOMESTIC RETAIL PRICE	JPY1,500 (excluding tax)

A beautiful mint glazed rice bowl. Looks wonderful on the table.



BRAND NAME	Shinjo Higashiyama-yaki
PRODUCT NAME	White-yu glazes rice bowl
GENERIC NAME	Rice bowl
MATERIALS	Clay
PERSON IN CHARGE	Yahei WAKUI
PRODUCTION AREA	Shinjo Yamagata Japan
SIZE	12 × 12 × 5.5cm
WEIGHT	230g
DOMESTIC RETAIL PRICE	JPY1,200 (excluding tax)

A white rice bowl in a simple and warm design that looks wonderful on the table.



BRAND NAME	Shinjo Higashiyama-yaki
PRODUCT NAME	Black namako-yu sake set
GENERIC NAME	Sake set (Katakuchi & 2 Sakazuki)
MATERIALS	Clay
PERSON IN CHARGE	Yahei WAKUI
PRODUCTION AREA	Shinjo Yamagata Japan
SIZE	Katakuchi : 9×7.5×12cm, Sakazuki : 7×7×3.5cm
WEIGHT	420g
DOMESTIC RETAIL PRICE	JPY6,000 (excluding tax)

A sake set glazed in beautiful traditional namakoyu. Sake pours beautifully with no drips.

Product information



BRAND NAME	Shinjo Higashiyama-yaki
PRODUCT NAME	Namako-yu glazed sake set
GENERIC NAME	Sake set (Choshi with handle & 2 Guinomi)
MATERIALS	Clay
PERSON IN CHARGE	Yahei WAKUI
PRODUCTION AREA	Shinjo Yamagata Japan
SIZE	Choshi : 12×10×12cm, Guinomi : 6×5cm
WEIGHT	500g
DOMESTIC RETAIL PRICE	JPY10,000 (excluding tax)

A sake set glazed in beautiful traditional namakoyu. Pours beautifully with no dripping. Suitable for special occasions.



BRAND NAME	Shinjo Higashiyama-yaki
PRODUCT NAME	Yuteki-monyo tenmoku rice bowl
GENERIC NAME	Rice bowl
MATERIALS	Clay
PERSON IN CHARGE	Yahei WAKUI
PRODUCTION AREA	Shinjo Yamagata Japan
SIZE	Choshi : 12 × 12 × 8cm
WEIGHT	300g
DOMESTIC RETAIL PRICE	JPY30,000 (excluding tax)

This sleek rice bowl is adorned with a distinctive fine pattern akin to scattered oil droplets, or yuteki.



BRAND NAME	Shinjo Higashiyama-yaki
PRODUCT NAME	Black namako-yu nagashi tsubo
GENERIC NAME	Pot
MATERIALS	Clay
PERSON IN CHARGE	Yahei WAKUI
PRODUCTION AREA	Shinjo Yamagata Japan
SIZE	Choshi : 19 × 19 × 22cm
WEIGHT	2,400g
DOMESTIC RETAIL PRICE	JPY30,000 (excluding tax)

A pot with a delightful namakoyu glaze flow.

Product information



BRAND NAME	Shinjo Higashiyama-yaki
PRODUCT NAME	Yuteki-monyo tokutoku sake set
GENERIC NAME	Sake set (Tokkuri & 2 Guinomi)
MATERIALS	Clay
PERSON IN CHARGE	Yahei WAKUI
PRODUCTION AREA	Shinjo Yamagata Japan
SIZE	Tokkuri : 8×8×15cm, Guinomi : 6×5cm
WEIGHT	360g
DOMESTIC RETAIL PRICE	JPY15,000 (excluding tax)

This sleek sake set is adorned with a distinctive fine pattern akin to scattered oil droplets, or yuteki. The sake vessel produces a "glug glug" sound when sake is poured, an irresistible sound for sake lovers.



BRAND NAME	Shinjo Higashiyama-yaki
PRODUCT NAME	Black namako-yu flower vase
GENERIC NAME	Flower vase
MATERIALS	Clay
PERSON IN CHARGE	Yahei WAKUI
PRODUCTION AREA	Shinjo Yamagata Japan
SIZE	10 × 10 × 23cm
WEIGHT	900g
DOMESTIC RETAIL PRICE	JPY8,000 (excluding tax)

A flower vase with a beautiful namakoyu glaze flow. This vase will bestow contrast to fresh flowers beautifully.



BRAND NAME	Shinjo Higashiyama-yaki
PRODUCT NAME	Yuteki-monyo cold sake set
GENERIC NAME	Sake set (Katakuchi & 2 Guinomi)
MATERIALS	Clay
PERSON IN CHARGE	Yahei WAKUI
PRODUCTION AREA	Shinjo Yamagata Japan
SIZE	Katakuchi : 8×9×11.5cm, Guinomi : 6×5cm
WEIGHT	400g
DOMESTIC RETAIL PRICE	JPY15,000 (excluding tax)

This sleek sake set is adorned with a distinctive fine pattern akin to scattered oil droplets, or yuteki. Help yourself with this beautiful sake vessel that pours well.

Product information



BRAND NAME	Shinjo Higashiyama-yaki
PRODUCT NAME	Yuteki-monyo incense burner
GENERIC NAME	Incense burner
MATERIALS	Clay
PERSON IN CHARGE	Yahei WAKUI
PRODUCTION AREA	Shinjo Yamagata Japan
SIZE	8.5 × 8.5 × 13cm
WEIGHT	480g
DOMESTIC RETAIL PRICE	JPY30,000 (excluding tax)

This incense burner is adorned with a distinctive fine pattern akin to scattered oil droplets, or yuteki.



BRAND NAME	Shinjo Higashiyama-yaki
PRODUCT NAME	Yuteki-monyo pot
GENERIC NAME	Pot
MATERIALS	Clay
PERSON IN CHARGE	Yahei WAKUI
PRODUCTION AREA	Shinjo Yamagata Japan
SIZE	19 × 19 × 24cm
WEIGHT	2,300g
DOMESTIC RETAIL PRICE	JPY50,000 (excluding tax)

This pot is adorned with a distinctive fine pattern akin to scattered oil droplets, or yuteki. Clad in silver shine with spots from iron crystals, this pot offers an air of dignity.



BRAND NAME	Shinjo Higashiyama-yaki
PRODUCT NAME	Namako-yu glazed sake set
GENERIC NAME	Sake set (Tokkuri & 2 Sakazuki)
MATERIALS	Clay
PERSON IN CHARGE	Yahei WAKUI
PRODUCTION AREA	Shinjo Yamagata Japan
SIZE	Tokkuri : 8×8×11cm, Sakazuki : 7×7×4cm
WEIGHT	320g
DOMESTIC RETAIL PRICE	JPY1,600 (excluding tax)

One distinctive feature of Shinjo's traditional craft of Shinjo Higashiyama-yaki that has continued since Edo period is its use of clear blue glaze, or namakoyu, that is said to represent the color of Dewa Province's snow in shade. Sake pitcher and cups that fit comfortably in your hands. (Blue, White)

◆ Product information



BRAND NAME	Shinjo Higashiyama-yaki
PRODUCT NAME	Mint-yu glazed Yunomi
GENERIC NAME	Tea cup
MATERIALS	Clay
PERSON IN CHARGE	Yahei WAKUI
PRODUCTION AREA	Shinjo Yamagata Japan
SIZE	9 × 9 × 4.5cm
WEIGHT	120g
DOMESTIC RETAIL PRICE	JPY600/pc (excluding tax)

A teacup that contrasts the color of green tea beautifully.



BRAND NAME	Shinjo Higashiyama-yaki
PRODUCT NAME	Direct heat sake set
GENERIC NAME	Sake set (Choshi & 2 Guinomi)
MATERIALS	Clay
PERSON IN CHARGE	Yahei WAKUI
PRODUCTION AREA	Shinjo Yamagata Japan
SIZE	Choshi : 12×10×12cm, Guinomi : 6.5×5cm
WEIGHT	600g
DOMESTIC RETAIL PRICE	JPY7,000/pc (excluding tax)

A sake set that can be heated over direct heat to serve hot sake, or simply serve chilled sake.



BRAND NAME	Shinjo Higashiyama-yaki
PRODUCT NAME	Yuteki-monyo sake set
GENERIC NAME	Sake set (Choshi with handle & 2 Guinomi)
MATERIALS	Clay
PERSON IN CHARGE	Yahei WAKUI
PRODUCTION AREA	Shinjo Yamagata Japan
SIZE	Choshi : 12×10×14cm, Guinomi : 6×5cm
WEIGHT	500g
DOMESTIC RETAIL PRICE	JPY25,000 (excluding tax)

This sleek sake set is adorned with a distinctive fine pattern akin to scattered oil droplets, or yuteki and will add elegance to your dinner.

Product information



BRAND NAME	Shinjo Higashiyama-yaki
PRODUCT NAME	Yuteki-monyo flower vase
GENERIC NAME	Flower vase
MATERIALS	Clay
PERSON IN CHARGE	Yahei WAKUI
PRODUCTION AREA	Shinjo Yamagata Japan
SIZE	9 × 9 × 24cm
WEIGHT	720g
DOMESTIC RETAIL PRICE	JPY18,000 (excluding tax)

This sleek vase is adorned with a distinctive fine pattern akin to scattered oil droplets, or yuteki.



BRAND NAME	Shinjo Higashiyama-yaki
PRODUCT NAME	1 shaku Ta-nuki (Raccoon)
GENERIC NAME	Object
MATERIALS	Clay
PERSON IN CHARGE	Yahei WAKUI
PRODUCTION AREA	Shinjo Yamagata Japan
SIZE	13 × 12 × H31cm
WEIGHT	2,200g
DOMESTIC RETAIL PRICE	JPY4,500 (excluding tax)

Tanuki (raccoon) is written ta-nuki (excel others), and is considered a lucky charm for achieving true happiness through prosperous business/deterrence of evil and disasters, and establishing yourself in society by living in peace and harmony. Suitable as an ornament at the front door or in your living room.



BRAND NAME	Shinjo Higashiyama-yaki
PRODUCT NAME	Ocha-nomi set
GENERIC NAME	Tea set (Hohin & 5 Yunomi)
MATERIALS	Clay
PERSON IN CHARGE	Yahei WAKUI
PRODUCTION AREA	Shinjo Yamagata Japan
SIZE	Hohin : 12×9.5×H9cm, Yunomi : 9×9×H5cm
WEIGHT	850g
DOMESTIC RETAIL PRICE	JPY4,000 (excluding tax)

One distinctive feature of Shinjo's traditional craft of Shinjo Higashiyama-yaki that has continued since Edo period is its use of clear blue glaze, or namakoyu, that is said to represent the color of Dewa Province's snow in shade. This tea set is glazed in namakoyu.

◆ Product information



BRAND NAME	Shinjo Higashiyama-yaki
PRODUCT NAME	Cold sake set
GENERIC NAME	Sake set (Katakuchi & 2 Sakazuki)
MATERIALS	Clay
PERSON IN CHARGE	Yahei WAKUI
PRODUCTION AREA	Shinjo Yamagata Japan
SIZE	Katakuchi W 7.5 / D 8.5cm / H 11.5cm Sakazuki W 7cm / D 8cm / H 4cm
WEIGHT	Katakuchi 290g、 Sakazuki 70g
DOMESTIC RETAIL PRICE	JPY2,600 (excluding tax)

The sake pouter and cups have dusky oceanic blue bodies with soft white streaks. This type of graduated blue hue that looks like a slice of a natural landscape is one of the characteristic features of Shinjo Higashiyama ware. The pouter fits the hand well, and pours without dripping to maximize the enjoyment of sake. Available in blue or white.



BRAND NAME	Shinjo Higashiyama-yaki
PRODUCT NAME	Free cup with handle
GENERIC NAME	Free cup
MATERIALS	Clay
PERSON IN CHARGE	Yahei WAKUI
PRODUCTION AREA	Shinjo Yamagata Japan
SIZE	W 12cm / D 8.5cm / H 10cm
WEIGHT	230g
DOMESTIC RETAIL PRICE	JPY1,300 (excluding tax)

The simplicity of this user-friendly cup makes it harmonize with any type of tableware or styling. Great as a personal mug. Available in blue, white or green.



BRAND NAME	Shinjo Higashiyama-yaki
PRODUCT NAME	Coffee cup and saucer
GENERIC NAME	Coffee cup and saucer
MATERIALS	Clay
PERSON IN CHARGE	Yahei WAKUI
PRODUCTION AREA	Shinjo Yamagata Japan
SIZE	Cup : 7cm x 10cm x H 8cm Saucer : 4cm x 14cm x 1cm
WEIGHT	Cup : 190g Saucer : 150g
DOMESTIC RETAIL PRICE	JPY1,400 (excluding tax)

One distinctive feature of Shinjo's traditional craft of Shinjo Higashiyama-yaki that has continued since the Edo period is its use of clear blue glaze, or namakoyu, that is said to represent the color of Dewa Province's snow in the shade. This is a coffee cup and saucer set glazed with Namakoyu.

◆ Product information



BRAND NAME	Shinjo Higashiyama-yaki
PRODUCT NAME	Round plate
GENERIC NAME	Round plate
MATERIALS	Clay
PERSON IN CHARGE	Yahei WAKUI
PRODUCTION AREA	Shinjo Yamagata Japan
SIZE	W 14cm / D 14cm / H 1cm
WEIGHT	150g
DOMESTIC RETAIL PRICE	JPY400 (excluding tax)

This plate is a good size for tidbits or sweets.

◆ Corporate profile



BUSINESS NUMBER	
COMPANY NAME(JAPANESE)	成島焼和久井窯
COMPANY NAME	Narushima-Yaki Wakuigama
YEAR OF ESTABLISHMENT	1830
TYPE OF INDUSTRY	Pottery and porcelain artist
MAIN PRODUCT	Pottery and porcelain works
POST CODE	9930033
COMPANY ADDRESS	1812 Imaizumi Nagai Yamagata Japan
REPRESENTATIVE	Osamu WAKUI
TEL	+81-(0)238-88-9205
FAX	
URL	
Instagram	wakuiosamu
E-commerce Website	
MAIN SELLING CHANNELS	Department store
SALES PERFORMANCE OF DOMESTIC AND OVERSEAS EC SALES	Domestic EC site
AVAILABLE LANGUAGE	Japanese

◆ EPISODE OF FOUNDATION FOUNDER'S THOUGHT

Narushima-Yaki was established as a potteries of the Yonezawa Domain in the middle of the Edo era, as a part of industry promotion under the instruction of Yozan UESUGI. Narushima-Yaki reached their peak at the end of Taisho Era, but then disappeared. At the beginning of Showa Era, our grandfather Toshizo WAKUI who was the second son of 「Shin Kame Ya」 a potteries of Hirashimizu-yaki in Yamagata city, moved to Nagai city for the better pottery clay. Then he started his own business manufacturing and selling of clay pipes to succeed.

◆ CRAFTSMAN'S THOUGHT, COMMITMENT RELATIONSHIP WITH THE COMMUNITY

We have a 250year history of continuing the traditional Narushima-Yaki, our aim is to keep on protecting our tradition. We make our products with a vision of the future. We use only local clay only, for glaze we use blend of ash from straw, bran and soil, all by-products from rice crops. We are particular about our work full of originality expression.

All of our work is done by the hand of skilled craftsman's hand with their full of emotion, we do not use any form. Our work is formed with a potter's wheel and Slab forming, the shape is the same but each one has a different expression and the scene. Each work is original and has the craftsman's originality.

We are a full member of the Japan Kogei Association, we would like to transmit the splendor of Japanese traditional craft to the world towards the development of traditional Japanese craft.

We also connect to the community through tours of our studios and offer field experience to kids from kinder gardens, students of elementary schools, junior high schools, high schools and special support education schools. We try our best to develop local culture awareness and successor upbringing so that we can gain the support, understanding and interest of traditional craft from the local people.

◆ Product information



BRAND NAME	Narushima-Yaki
PRODUCT NAME	Square incense burner, celadon and white porcelain
GENERIC NAME	Incense burner
MATERIALS	Porcelain
PERSON IN CHARGE	Osamu WAKUI
PRODUCTION AREA	Nagai,Yamagata, Japan
SIZE	14cm x 10cm x 10cm
WEIGHT	1kg
DOMESTIC RETAIL PRICE	JPY100,000.- (excluding tax)

This work has an elaborated form in four direction by slab forming.



BRAND NAME	Narushima-Yaki
PRODUCT NAME	Tokkuri, color changed to gold in the
GENERIC NAME	Tokkuri
MATERIALS	Clay
PERSON IN CHARGE	Osamu WAKUI
PRODUCTION AREA	Nagai,Yamagata, Japan
SIZE	13cm x 7cm x 7cm
WEIGHT	200g
DOMESTIC RETAIL PRICE	JPY30,000.- (excluding tax)

This work is formed by potter's wheel. Unglazed calcination process. Gold kiln modification.



BRAND NAME	Narushima-Yaki
PRODUCT NAME	Tokkuri with glittering glaze
GENERIC NAME	Tokkuri
MATERIALS	Clay
PERSON IN CHARGE	Osamu WAKUI
PRODUCTION AREA	Nagai,Yamagata, Japan
SIZE	14.5cm x 8cm x 8cm
WEIGHT	200g
DOMESTIC RETAIL PRICE	JPY30,000.- (excluding tax)

This work is made with local clay and formed using a potter's wheel. It expresses a beautiful traditional Narushima-Yaki glaze and fired.

◆ Product information



BRAND NAME	Narushima-Yaki
PRODUCT NAME	Incense burner, colored porcelain with
GENERIC NAME	Incense burner
MATERIALS	Porcelain
PERSON IN CHARGE	Osamu WAKUI
PRODUCTION AREA	Nagai,Yamagata, Japan
SIZE	11cm x 11cm x 11cm
WEIGHT	350g
DOMESTIC RETAIL PRICE	JPY350,000.- (excluding tax)

This work is made with porcelain clay and formed using a potter's wheel. The iris pattern comes from repeatedly applying colored clay slurry and expressed in relief. The thin lines of the petals are finished by in laying.



BRAND NAME	Narushima-Yaki
PRODUCT NAME	Incense burner, celadon and white
GENERIC NAME	Incense burner
MATERIALS	Porcelain and clay
PERSON IN CHARGE	Osamu WAKUI
PRODUCTION AREA	Nagai,Yamagata, Japan
SIZE	12.5cm x 9.6cm x 9.6cm
WEIGHT	500g
DOMESTIC RETAIL PRICE	JPY200,000.- (excluding tax)

The main body of the incense burner is made with porcelain clay and formed using a potter's wheel and planed. It expresses a rhythmical and refreshingly beautiful blue and white glaze. In contrast, Hoya is made with clay and wildly expressed by unglazed calcination. This work is done with the harmony of opposite beautifulness in mind.



BRAND NAME	Narusimayaki Wakuigama
PRODUCT NAME	Glittering glazed pot
GENERIC NAME	Pot
MATERIALS	Clay
PERSON IN CHARGE	Osamu Wakui
PRODUCTION AREA	Nagai,Yamagata, Japan
SIZE	28 x 28 x H25cm
WEIGHT	4.0kg
DOMESTIC RETAIL PRICE	JPY2,000,000 (excluding tax)

Wheel-thrown from a single type of local pottery clay. It gives a fresh expression to the beautiful glaze traditional to Narushima ware.

◆ Product information



BRAND NAME	Narushima-Yaki
PRODUCT NAME	Guinomi, color changed to gold in the kiln without any glazes
GENERIC NAME	Guinomi
MATERIALS	Clay
PERSON IN CHARGE	Osamu WAKUI
PRODUCTION AREA	Nagai,Yamagata, Japan
SIZE	5cm x 6.5cm x 6.5cm
WEIGHT	100g
DOMESTIC RETAIL PRICE	JPY30,000.- (excluding tax)

This work is made with local clay and formed using a potter's wheel. It is made with an unglazed calcination process and transformed to a golden color in a kiln. It expresses an interesting harmony of a beautiful gold kiln transform and a wild landscape.



BRAND NAME	Narushima-Yaki
PRODUCT NAME	Yunomi, color changed to gold in the kiln without any glazes
GENERIC NAME	Yunomi
MATERIALS	Clay
PERSON IN CHARGE	Osamu WAKUI
PRODUCTION AREA	Nagai,Yamagata, Japan
SIZE	7.5cm x 7cm x 7cm
WEIGHT	100g
DOMESTIC RETAIL PRICE	JPY30,000.- (excluding tax)

This work is made with local clay and formed using a potter's wheel. It is made with an unglazed calcination process and transformed to a golden color in a kiln. It expresses an interesting harmony of beautiful gold kiln transform and wild landscape.



BRAND NAME	Narusimayaki Wakuigama
PRODUCT NAME	Namako glazed vase with ears
GENERIC NAME	vase
MATERIALS	Clay
PERSON IN CHARGE	Osamu Wakui
PRODUCTION AREA	Nagai,Yamagata, Japan
SIZE	21 x 18 x H39cm
WEIGHT	3.5kg
DOMESTIC RETAIL PRICE	JPY1,500,000 (excluding tax)

Wheel-thrown from a single type of local pottery clay. It fully expresses the beauty of glaze traditional to Narushima ware.

◆ Product information



BRAND NAME	Narushima-Yaki
PRODUCT NAME	Square dish, celadon and white porcelain with heron grass
GENERIC NAME	Square dish
MATERIALS	Porcelain
PERSON IN CHARGE	Osamu WAKUI
PRODUCTION AREA	Nagai,Yamagata, Japan
SIZE	1.3cm x 14.5cm x 14.5cm
WEIGHT	250g
DOMESTIC RETAIL PRICE	JPY50,000.- (excluding tax)

This work is made with porcelain clay and formed by molding. After drying, the pattern of phalaenopsis is repeatedly applied with colored clay slurry. An expression of a fringed orchid in relief, is complemented with a beautiful blue and white glaze and fired.



BRAND NAME	Narushima-Yaki
PRODUCT NAME	Vase, inlaid porcelain with snowflakes
GENERIC NAME	Vase
MATERIALS	Porcelain
PERSON IN CHARGE	Osamu WAKUI
PRODUCTION AREA	Nagai,Yamagata, Japan
SIZE	17cm x 27cm x 27cm
WEIGHT	1.2kg
DOMESTIC RETAIL PRICE	JPY350,000.- (excluding tax)

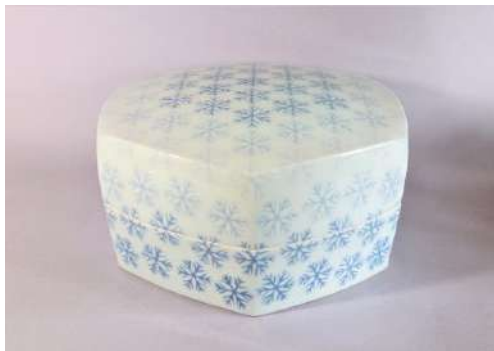
This work is made with porcelain clay and formed using a potter's wheel. After drying, it is cut out dodecagonal to complete the form, then carved with snow crystal for a flower pattern and gradation is expressed by inlaying colored clay into the back ground.



BRAND NAME	Narushima-Yaki
PRODUCT NAME	Box, celadon and white porcelain with gradation mountain flower
GENERIC NAME	Box
MATERIALS	Porcelain
PERSON IN CHARGE	Osamu WAKUI
PRODUCTION AREA	Nagai,Yamagata, Japan
SIZE	11cm x 24.5cm x 14cm
WEIGHT	3.0kg
DOMESTIC RETAIL PRICE	JPY2,000,000.- (excluding tax)

This work is made with two lumps of porcelain clay dried for few months, used on the outer surface together before being and carved out enclose and complete the form. Each petal of the flower pattern is expressed in gradation by inlaying.

◆ Product information



BRAND NAME	Narushima-Yaki
PRODUCT NAME	Hexagon box, celadon and white porcelain with gradation snowflakes
GENERIC NAME	Hexagon box
MATERIALS	Porcelain
PERSON IN CHARGE	Osamu WAKUI
PRODUCTION AREA	Nagai,Yamagata, Japan
SIZE	14.5cm x 27.5cm x 29.5cm
WEIGHT	5.0kg
DOMESTIC RETAIL PRICE	JPY3,000,000.- (excluding tax)

This work is made with porcelain clay and thickly formed with a potter's wheel. While drying, the form was completed by shaving to aligning the inside and outside of the lid and the body to the hexagon. Snow crystal pattern is expressed with gradation by inlaying colored clay into the background.



BRAND NAME	Narushima-Yaki
PRODUCT NAME	Octagonal box celadon and white porcelain with gradation flowers
GENERIC NAME	Octagonal box
MATERIALS	Porcelain
PERSON IN CHARGE	Osamu WAKUI
PRODUCTION AREA	Nagai,Yamagata, Japan
SIZE	13.5cm x 28cm x 28cm
WEIGHT	4.3kg
DOMESTIC RETAIL PRICE	JPY3,000,000.- (excluding tax)

This work is made with porcelain clay and thickly formed with a potter's wheel. While drying, the form was completed by shaving to aligning the inside and outside of the lid and the body to the octagon. Each petal of the flower pattern is expressed with gradation by inlaying colored clay into the background.



BRAND NAME	Narushima-Yaki
PRODUCT NAME	Pot, colored porcelain with phalaenopsis orchid
GENERIC NAME	Pot
MATERIALS	Porcelain
PERSON IN CHARGE	Osamu WAKUI
PRODUCTION AREA	Nagai,Yamagata, Japan
SIZE	22cm x 25cm x 25cm
WEIGHT	2.7kg
DOMESTIC RETAIL PRICE	JPY1,500,000.- (excluding tax)

This work is made with porcelain clay and formed with a potter's wheel. After completely drying, phalaenopsis pattern is repeatedly applied by colored clay slurry and expressed in relief.

◆ Product information



BRAND NAME	Narushima-Yaki
PRODUCT NAME	Square pot, celadon and white porcelain with cherry blossoms
GENERIC NAME	Square pot
MATERIALS	Porcelain
PERSON IN CHARGE	Osamu WAKUI
PRODUCTION AREA	Nagai,Yamagata, Japan
SIZE	41cm x 20.5cm x 20.5cm
WEIGHT	6.4kg
DOMESTIC RETAIL PRICE	JPY3,000,000.- (excluding tax)

This work is made with porcelain clay and formed by slab forming. After completely drying, cherry blossom pattern is repeatedly applied by colored clay slurry and expressed in relief. Finished with a beautiful blue and white porcelain glaze and fired.



BRAND NAME	Narushima-Yaki
PRODUCT NAME	Square pot, colored porcelain with Oriental lady's thumb pattern
GENERIC NAME	Square pot
MATERIALS	Porcelain
PERSON IN CHARGE	Osamu WAKUI
PRODUCTION AREA	Nagai,Yamagata, Japan
SIZE	38cm x 15cm x 15cm
WEIGHT	4.2kg
DOMESTIC RETAIL PRICE	JPY2,800,000.- (excluding tax)

This work is made with porcelain clay and formed by slab forming. After completely drying, Persicaria longisetata pattern (Akamanma) is repeatedly applied by colored clay slurry and expressed in relief.



BRAND NAME	Narushima-Yaki
PRODUCT NAME	Rhomb pot, celadon and with porcelain with wisteria
GENERIC NAME	Rhomb pot
MATERIALS	Porcelain
PERSON IN CHARGE	Osamu WAKUI
PRODUCTION AREA	Nagai,Yamagata, Japan
SIZE	45cm x 28cm x 19cm
WEIGHT	4.0kg
DOMESTIC RETAIL PRICE	JPY3,000,000.- (excluding tax)

This work is made with porcelain clay and formed by slab forming. After completely drying, wisteria flowers are repeatedly applied by colored clay slurry and expressed in relief.

◆ Product information



BRAND NAME	Narusimayaki Wkuigama
PRODUCT NAME	Tea bowl, color changed to gold in the kiln without any glazes
GENERIC NAME	Tea bowl
MATERIALS	Pottery clay
PERSON IN CHARGE	Osamu Wakui
PRODUCTION AREA	Nagai,Yamagata, Japan
SIZE	12.8×12.8×H8cm
WEIGHT	0.8kg
DOMESTIC RETAIL PRICE	JPY3,000,000 (excluding tax)

Made from a single type of local pottery clay, handmade by pinching. Unglazed yakishime ware fired in a traditional wood-fired kiln for a kiln mutation (yohen) that results in an attractive gold-hued surface effect (keshiki).



BRAND NAME	Narusimayaki Wkuigama
PRODUCT NAME	Pot, color changed to gold in the kiln without any glazes
GENERIC NAME	Pot
MATERIALS	Pottery clay
PERSON IN CHARGE	Osamu Wakui
PRODUCTION AREA	Nagai,Yamagata, Japan
SIZE	17.5×17.5×H23cm
WEIGHT	1.2kg
DOMESTIC RETAIL PRICE	JPY1,200,000 (excluding tax)

Wheel-thrown from a single type of local pottery clay. Unglazed yakishime ware fired in a traditional wood-fired kiln for a kiln mutation (yohen) that results in an attractive gold-hued surface effect (keshiki).



BRAND NAME	Narusimayaki Wkuigama
PRODUCT NAME	Tea bowl, color changed to gold in the kiln without any glazes
GENERIC NAME	Tea bowl
MATERIALS	Pottery clay
PERSON IN CHARGE	Osamu Wakui
PRODUCTION AREA	Nagai,Yamagata, Japan
SIZE	12.8×12.8×H8cm
WEIGHT	0.7kg
DOMESTIC RETAIL PRICE	JPY2,500,000 (excluding tax)

Wheel-thrown from a single type of local pottery clay. Unglazed yakishime ware fired in a traditional wood-fired kiln for a kiln mutation (yohen) that results in an attractive gold-hued surface effect (keshiki).

◆ Product information



BRAND NAME	Narusimayaki Wkuigama
PRODUCT NAME	Flower vase, color changed in the kiln without any glazes
GENERIC NAME	Pot
MATERIALS	Pottery clay
PERSON IN CHARGE	Osamu Wakui
PRODUCTION AREA	Nagai,Yamagata, Japan
SIZE	1.5kg
WEIGHT	23.5x23.5xH22cm
DOMESTIC RETAIL PRICE	JPY500,000 (excluding tax)

Wheel-thrown from a single type of local pottery clay. Unglazed yakishime ware fired in a traditional wood-fired kiln for a kiln mutation (yohen) that results in an attractive gold-hued surface effect (keshiki).



BRAND NAME	Narusimayaki Wkuigama
PRODUCT NAME	Potl and glass, color changed to gold in the kiln without any glazes
GENERIC NAME	
MATERIALS	Pottery clay
PERSON IN CHARGE	Osamu Wakui
PRODUCTION AREA	Nagai,Yamagata, Japan
SIZE	Tokkuri 8 x 8 x H13.5cm Guinomi 7 x 7 x H4.5cm
WEIGHT	Tokkuri 230g Guinomi 63g
DOMESTIC RETAIL PRICE	JPY120,000 (Pot x 2, Glass x 2) (excluding tax)

Wheel-thrown from a single type of local pottery clay. Unglazed yakishime ware fired in a traditional wood-fired kiln for a kiln mutation (yohen) that results in an attractive gold-hued surface effect (keshiki).



BRAND NAME	Narusimayaki Wkuigama
PRODUCT NAME	Sake pot and glass, white porcelain
GENERIC NAME	
MATERIALS	Sake pot and glass
PERSON IN CHARGE	porcelain
PRODUCTION AREA	Osamu Wakui
SIZE	Nagai,Yamagata, Japan
WEIGHT	Tokkuri 9 x 9 x H10cm Sakazuki 8.5 x 8.5 x H10cm
DOMESTIC RETAIL PRICE	Tokkuri 250g Sakazuki 75g

Wheel-thrown from porcelain clay. Devoid of decoration to emphasize the purity of form, and highlight the beauty of hakuji (white porcelain).

◆ Corporate profile



BUSINESS NUMBER	
COMPANY NAME(JAPANESE)	平清水焼 青龍窯
COMPANY NAME	Hirashimizu-yaki Seiryugama
YEAR OF ESTABLISHMENT	Early Meiji Period
TYPE OF INDUSTRY	Manufacturing, sales of Pottery and porcelain
MAIN PRODUCT	Pottery and porcelain
POST CODE	990-2401
COMPANY ADDRESS	50-1 Hirashimizu Yamagata Yamagata Japan
REPRESENTATIVE	Ryuhei NIWA
TEL	+81-(0)23-631-2828
FAX	+81-(0)23-631-2829
URL	http://seiryugama.com/
Instagram	hirashimizu_seiryugama
Facebook	seiryugama
E-commerce Website	
MAIN SELLING CHANNELS	In-house store, Domestic retail stores and EC site
SALES PERFORMANCE OF DOMESTIC AND OVERSEAS EC SALES	Domestic EC site (Consignment sales)
AVAILABLE LANGUAGE	Japanese, English(e-mail)

◆ EPISODE OF FOUNDATION FOUNDER'S THOUGHT

In the early Meiji period, Seiryugama was founded by Josuke Niwa as one of the Hirashimizu-yaki (Hirashimizu ware) pottery pieces. During the Ryunosuke period (the third generation), the pottery was named "Seiryugama," taking one Chinese character each from "Hirashimizu" and "Ryunosuke." After finishing his apprenticeship in Mino and Kutani, Ryunosuke introduced the technique of overglaze painting called "uwae" that he had mastered, and worked on developing new products. At that time, he paid attention to the local original soil containing iron sulfide, which had not been used by anyone, and perfected seiji (celadon) like the surface of a pear by daringly utilizing the features of the soil. It was named "Nashi Seiji (pear celadon)" and was introduced in Japan Pottery Old and New which was held at the Detroit Institute of Arts in 1950. In addition, works using hakuyu (buttery-white glaze), which were displayed at international exhibitions such as EXPO 1958 Brussels, were named "Zansetsu (remaining snow)," reflecting the snowy landscape in spring. These production methods have been improved daily by the fourth (and current) pottery owner, Ryochi, and our craftsmen, and passed down to the present time as Seiryugama's style.

◆ CRAFTSMAN'S THOUGHT, COMMITMENT RELATIONSHIP WITH THE COMMUNITY

Seiryugama independently conducts all processes, from making clay out of the original soil produced in the Hirashimizu area, to product commercialization. Products made at Seiryugama are characterized by a simple and subdued texture. Life in the satoyama (mountain village) deep in the snow enabled the creation of such a style. In particular, "Zansetsu," one of Seiryugama's representative works, was produced by reflecting the landscape of mountains in the Tohoku region where snow remains even when the long winter finally ends. Iron sulfide contained in the original soil reacts in the firing, which creates a unique expression in the whiteness of the product and brings about a texture that expresses wabi and sabi. Depending on the firing situation at different times, the same "Zansetsu" products show different expressions with the crystals produced. The smooth texture of the products fits comfortably in the user's hand, and the simple shape harmonizes with any scene. In recent years, we have received an increasing number of orders and inquiries from abroad. We hope that Seiryugama's products will make you think of the snowy landscape in faraway Yamagata and have a relaxing time in your daily life.

Product information



BRAND NAME	Seiryugama
PRODUCT NAME	Zansetsu rice bowl (Large)
GENERIC NAME	Rice bowl
MATERIALS	Clay
PERSON IN CHARGE	Niwa
PRODUCTION AREA	Yamagata Yamagata Japan
SIZE	H5.5cm x W12.5cm
WEIGHT	abt.220g
DOMESTIC RETAIL PRICE	JPY2,600 (excluding tax)

Photo: left. This is a rice bowl that is easy to hold and use. This simple item consisting of calm colors can be used for a long time and never becomes boring.



BRAND NAME	Seiryugama
PRODUCT NAME	Zansetsu rice bowl (Small)
GENERIC NAME	Rice bowl
MATERIALS	Clay
PERSON IN CHARGE	Niwa
PRODUCTION AREA	Yamagata Yamagata Japan
SIZE	H5.5cm x W12cm
WEIGHT	abt.180g
DOMESTIC RETAIL PRICE	JPY2,400 (excluding tax)

Photo: right. This is a small rice bowl that is easy to hold and use. This simple item consisting of calm colors can be used for a long time and never becomes boring.



BRAND NAME	Seiryugama
PRODUCT NAME	Zansetsu rice Donburi
GENERIC NAME	Bowl
MATERIALS	Clay
PERSON IN CHARGE	Niwa
PRODUCTION AREA	Yamagata Yamagata Japan
SIZE	H9cm x W14cm
WEIGHT	abt.400g
DOMESTIC RETAIL PRICE	JPY4,000 (excluding tax)

As this bowl is small but deep, you can use it for rice as well as noodles.

◆ Product information



BRAND NAME	Seiryugama
PRODUCT NAME	Zansetsu tea cup 1
GENERIC NAME	tea cup
MATERIALS	Clay
PERSON IN CHARGE	Niwa
PRODUCTION AREA	Yamagata Yamagata Japan
SIZE	H6.7cm x W8cm Capacity : abt.180ml
WEIGHT	abt.130g
DOMESTIC RETAIL PRICE	JPY2,300 (excluding tax)

The list price is for one tea bowl. The product fits perfectly in your hand. You can use it for both tea and coffee.

❖ Corporate profile



BUSINESS NUMBER	
COMPANY NAME(JAPANESE)	245 studio
COMPANY NAME	245 studio
YEAR OF ESTABLISHMENT	2019
TYPE OF INDUSTRY	Pottery/Porcelain Manufacturing and sales
MAIN PRODUCT	Pottery/Porcelain
POST CODE	995-0052
COMPANY ADDRESS	3120-52 Natori Murayama Yamagata Japan
REPRESENTATIVE	Takahiro Yahagi
PERSON IN CHARGE	
TEL	+81-(0)90-5830-5177
FAX	
URL	
Instagram	yahagitakahiro
E-commerce Website	
MAIN SELLING CHANNELS	Domestic retail stores
SALES PERFORMANCE OF DOMESTIC AND OVERSEAS EC SALES	Domestic EC Sales
AVAILABLE LANGUAGE	Japanese

❖ EPISODE OF FOUNDATION FOUNDER'S THOUGHT

The four seasons in Yamagata Prefecture are distinct, and each season has its own appeal. Their intrinsic beauty overlaps with what many of us draw in our mind as the archetype of nature. In this land of abundant culinary culture where one can appreciate the transient passage of the seasons, we are working to convey the charm of Yamagata through pottery. We strive to create the kind of pottery that helps people to discover the subtle beauty of nature in their everyday life that might be overlooked because it is so often taken for granted, and infuse life with the joy of eating. We also hope that our products blend into and enrich people's daily lifestyles.

❖ CRAFTSMAN'S THOUGHT, COMMITMENT RELATIONSHIP WITH THE COMMUNITY

In winter, the area around our studio is covered in stark white snow, and tranquility prevails.

We mainly produce tableware making full use of the characteristics of fine porcelain clay with a texture like powdered snow.

We are particularly keen on creating tableware with textured surfaces that distinguish themselves from other ordinary white dishes. These include a texture reminiscent of excavated ruins and antique-like muted color tone achieved by plating silver.

In addition to household use, our products are used in restaurants that offer dishes using local ingredients.

Product information



BRAND NAME	245studio
PRODUCT NAME	mug1/2 scratch wb
GENERIC NAME	mug
MATERIALS	Porcelain
PERSON IN CHARGE	Takahiro Yahagi
PRODUCTION AREA	Murayama Yamagata Japan
SIZE	φ7.5 × h8cm
WEIGHT	
DOMESTIC RETAIL PRICE	JPY6,000 (excluding tax)

The upper part of the mug has a glossy sheen texture, whereas the lower part is finished with an antique-like matt texture achieved by applying an aging process. Thrown thinly on a wheel, it is light when held in the hand and gives the drink a kick when you sip from it.



BRAND NAME	245 studio
PRODUCT NAME	bowl free white & black
GENERIC NAME	bowl
MATERIALS	Porcelain
PERSON IN CHARGE	Takahiro Yahagi
PRODUCTION AREA	Murayama Yamagata Japan
SIZE	φ16 × h7.5cm
WEIGHT	
DOMESTIC RETAIL PRICE	JPY6,000 (excluding tax)

This bowl is produced envisioning scenery consisting of frosted fields and mountains covered in snow. The inside of the cup is glazed to the rim while the exterior has a matt finish created by fine engraving and polishing. The rim is finished with a black decoration, delivering an ethereal atmosphere.



BRAND NAME	245 studio
PRODUCT NAME	plate scratch w&b no.3 25
GENERIC NAME	plate
MATERIALS	Porcelain
PERSON IN CHARGE	Takahiro Yahagi
PRODUCTION AREA	Murayama Yamagata Japan
SIZE	φ25 × h1.5cm
WEIGHT	
DOMESTIC RETAIL PRICE	JPY10,000 (excluding tax)

This plate features a distinctive distressed texture as if unearthed from ruins. Repeated polishing and scratching processes create the matt texture. The plate is partly glazed to add freshness to the expression.

◆ Corporate profile



BUSINESS NUMBER	
COMPANY NAME(JAPANESE)	Akishinokama
COMPANY NAME	Akishinokama
YEAR OF ESTABLISHMENT	1976
TYPE OF INDUSTRY	making pottery and sales
MAIN PRODUCT	Pottery
POST CODE	999-3124
COMPANY ADDRESS	1089-2 Kanaoi Kaminoyama Yamagata Japan
REPRESENTATIVE	Noboru Jinbo
PERSON IN CHARGE	
TEL	+81-(0)23-673-3158
FAX	+81-(0)23-673-3158
URL	http://www.akishino.info https://kapukopu.wixsite.com/akishinokapukopu
Instagram	akishino_kama
E-commerce Website	https://kapukopu.wixsite.com/akishinokapukopu
MAIN SELLING CHANNELS	Gallery sited our studio, shops, museum shops
SALES PERFORMANCE OF DOMESTIC AND OVERSEAS EC SALES	domestic EC site
AVAILABLE LANGUAGE	Japanese

◆ EPISODE OF FOUNDATION FOUNDER'S THOUGHT

In 1976, We, Noboru and Hiroko Jinbo, started to make pottery works in Kaminoyama city where a Japanese well-known poet Mokichi Saito was born. Our studio is located at the foot of Mt.Sankichi, in the east of Kaminoyama, and there are a lot of nature around our pottery studio. We painted some wildflowers and birds we can see around the studio using overglazed painting and underglazed iron painting. Then, our daughter Akiko Jinbo and her husband Yasunobu Wakabayashi started to work together, so there are four potters in this studio now. As each of us makes own works by using own pottery technique, for examples, Yasunobu uses "incrustation technique" called "zougan" in Japanese and persues black glazing, and Akiko mainly uses "deisai" in Japanese painting with colored mud on greenware. Styles of our works are different respectively, so you can see four styles of works at the gallery sited our studio.

◆ CRAFTMAN'S THOUGHT, COMMITMENT RELATIONSHIP WITH THE COMMUNITY

Our thought is 'modern crafts into our daily lives ' which is based on crafts movement occurred in 1970 in Japan. We think that using well-made things or beautiful things in daily life makes people comfortable. The goal we are aiming as a potter is to make works sincerely and to persue its quality. We'd like to express our efforts to be good potters into daily-use items such as cups, bowls, plates, vases, etc not into special art works.

Product information



BRAND NAME	Akishinokama
PRODUCT NAME	Single flower vase bird design
GENERIC NAME	Vase
MATERIALS	Clay
PERSON IN CHARGE	Hiroko Jinbo
PRODUCTION AREA	Kaminoyama Yamagata Japan
SIZE	9.8×9.8×11cm
WEIGHT	365g
DOMESTIC RETAIL PRICE	JPY7,150 (tax included)

One of the decorative styles that Hiroko Jinbo excels at the most, this design features a bird motif executed in light-hued enamels over a white-glazed black body. The bud vase goes especially well with unpretentious flowering plants.



BRAND NAME	Akishinokama
PRODUCT NAME	Free cup leaf design 1
GENERIC NAME	Cup
MATERIALS	Clay
PERSON IN CHARGE	Noboru Jinbo
PRODUCTION AREA	Kaminoyama Yamagata Japan
SIZE	φ7×9.6cm
WEIGHT	171g
DOMESTIC RETAIL PRICE	JPY2,970 (tax included)

This simple design features enamel decoration in a plant and leaf motif over white glaze. The shape fits the hand well, making the cup easy to hold. It represents one of the classic Noboru Jinbo styles.



BRAND NAME	Akishinokama
PRODUCT NAME	Free cup bird design 2
GENERIC NAME	Cup
MATERIALS	Clay
PERSON IN CHARGE	Hiroko Jinbo
PRODUCTION AREA	Kaminoyama Yamagata Japan
SIZE	φ7.4×9.8cm
WEIGHT	184g
DOMESTIC RETAIL PRICE	JPY2,970 (tax included)

White glaze is applied over a black body, on which a single lingering bird has been painted. The inside of the cup is white. The shape fits the hand well, making the cup easy to hold.

Product information



BRAND NAME	Akishinokama
PRODUCT NAME	Line designed Mug
GENERIC NAME	Mug
MATERIALS	Clay
PERSON IN CHARGE	Yasunobu Wakabayashi
PRODUCTION AREA	Kaminoyama Yamagata Japan
SIZE	φ8.2×8.4cm
WEIGHT	188g
DOMESTIC RETAIL PRICE	JPY3,080 (tax included)

In a style excelled at by Yasunobu Wakabayashi, fine inlaid lines are combined with black glaze for a sophisticated design. The inside of the cup is black as well.



BRAND NAME	Akishinokama
PRODUCT NAME	Line Painted Mug bird design
GENERIC NAME	Mug
MATERIALS	Clay
PERSON IN CHARGE	Akiko Jinbo
PRODUCTION AREA	Kaminoyama Yamagata Japan
SIZE	φ8.2×8.7cm
WEIGHT	227g
DOMESTIC RETAIL PRICE	JPY3,080 (tax included)

This cup is slip-decorated with a central bird motif on a background of brown vertical lines. It is one of Akiko Jinbo's hallmark designs. The inside of the cup has a similar color to the handle.



BRAND NAME	Akishinokama
PRODUCT NAME	Small single flower vase plant design
GENERIC NAME	Vase
MATERIALS	Clay
PERSON IN CHARGE	Noboru Jinbo
PRODUCTION AREA	Kaminoyama Yamagata Japan
SIZE	6.8×6.8×8.5cm
WEIGHT	145g
DOMESTIC RETAIL PRICE	JPY3,300 (tax included)

Small vase finished with white glaze and a painted smartweed motif.

Product information



BRAND NAME	Akishinokama
PRODUCT NAME	House (Tou no ie) (S)
GENERIC NAME	interiour object
MATERIALS	Clay
PERSON IN CHARGE	Akishinokama
PRODUCTION AREA	Kaminoyama Yamagata Japan
SIZE	(approx.) 2.5×2.5×2.5cm (1 piece)
WEIGHT	20-30g
DOMESTIC RETAIL PRICE	JPY440 (1 piece) (tax included)

Small enough to fit in your hand, these tiny ceramic houses are fun to display at home or on your desk. No two are exactly the same size, shape and color due to the handmade nature of the product.



BRAND NAME	Akishinokama
PRODUCT NAME	House (Tou no ie) (L)
GENERIC NAME	interiour object
MATERIALS	Clay
PERSON IN CHARGE	Akishinokama
PRODUCTION AREA	Kaminoyama Yamagata Japan
SIZE	(approx.) 3×2.2-3.3×4.5-6.5cm (1 piece)
WEIGHT	70-90g
DOMESTIC RETAIL PRICE	JPY1,100 (1 piece) (tax included)

Taller versions of the ceramic house. No two are exactly the same size, shape and color due to the handmade nature of the product.



BRAND NAME	Akishinokama
PRODUCT NAME	House(Tou no ie) (A set)
GENERIC NAME	interiour object
MATERIALS	Clay, wood (plate)
PERSON IN CHARGE	Akishinokama
PRODUCTION AREA	Kaminoyama Yamagata Japan
SIZE	20×10cm (plate) , hight 6-6.5cm(approx.)
WEIGHT	316g
DOMESTIC RETAIL PRICE	JPY4,730 (1 set) (tax included)

Seven small ceramic houses and one large ceramic house are included in this townscape set, which also includes a wood display base. Please leave the selection of houses to us--we will make the selection according to your color preference.